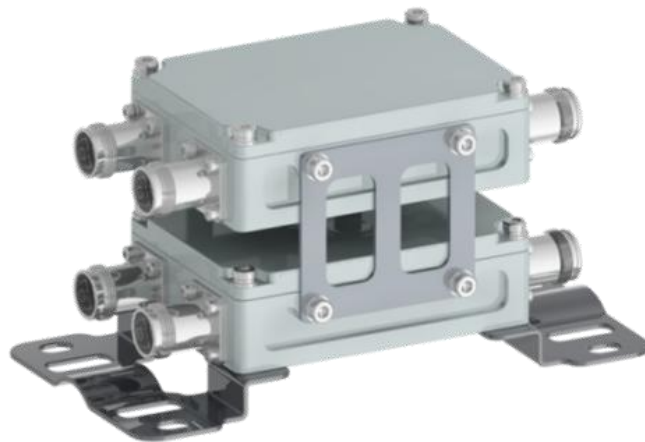
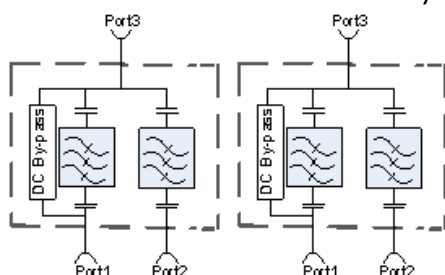


FEATURES:

- Splits or combines Cellular Freq in the **600/700+FN/850/AWS-1/AWS-3/PCS/WCS/BRS Bands** (617MHz-2690MHz) and **CBRS/C-Band/LTE-LAA Bands** (3300MHz-4200MHz, 5150MHz-5925MHz)
- Available in **Single Model (901C Series), Twin Model (903C Series) & Quad Model (904C Series)**
- Minimum 40dB Isolation between the bands
- Very low Insertion Loss with superior out of band rejections
- Available in 4.3-10 or NEX10 Connectors
- Ease of Mounting with mounting holes and brackets
- Low-PIM with High Power Handling
- RoHS Compliant
- Weatherproof for Outdoor installation
- In Stock and Available Immediately


ELECTRICAL SPECIFICATIONS:

Frequency Bands	600,700+FN,850,PCS,AWS-1&3,WCS,BRS 617 MHz - 896 MHz 1695 MHz - 2690 MHz	CBRS,C-Band,LTE-LAA 3300 MHz - 4200 MHz 5150 MHz - 5925 MHz
Passband Insertion Loss	0.25 dB	
Isolation	≥ 40 dB	
Return Loss	18 dB	
Impedance	50 Ohms	
Input Power / Port	150 Watts (Avg)	
DC Pass Current	4000 mA (Typ) (Available on Port1) (DC Block Available on Request)	
Lightning Protection	8/20S 10kA Pulse (IEC 801-5)	
Intermodulation (PIM - 3 rd)	-161 dBc (2 Tones +43 dBm)	
MTBF Hours	≥ 500,000	

MECHANICAL SPECIFICATIONS:

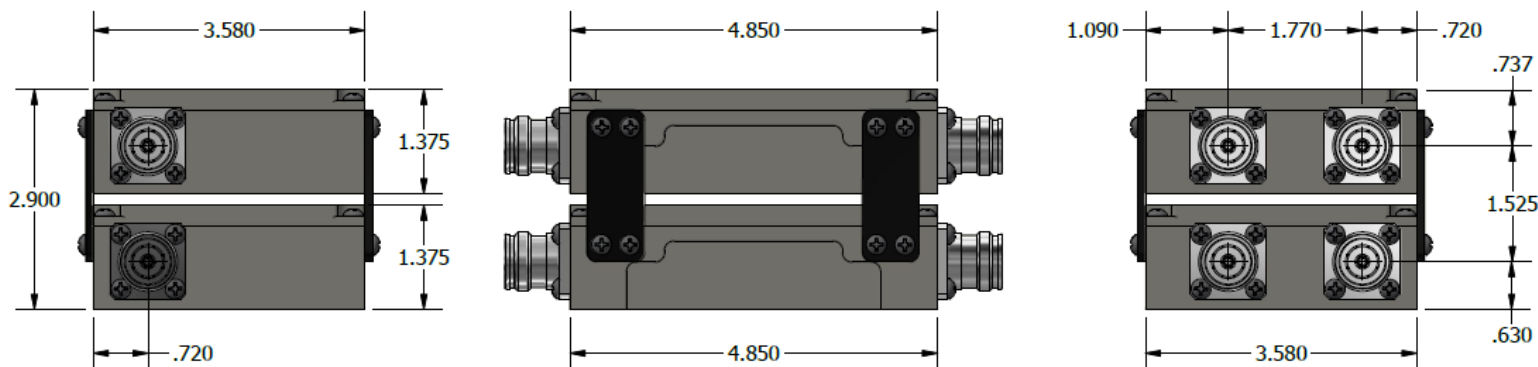
Connectors:	4.3-10 (D43) / NEX10 (X10)
Housing Finish:	Aluminum Body
Mounting Method:	Mounting Bracket
Temperature Range:	-30°C to 75°C
Humidity:	5% - 95%
Weight:	9.00 lbs
Environment:	IP67

ORDERING INFO:
Single Model:

4.3-10 Connector:	Part#: 902C-1700-4700-D43
NEX10 Connector:	Part#: 902C-1700-4700-X10

**SINGLE/TWIN/QUAD MODEL
AVAILABLE**

Dimensions for 902C-1700-4700-D43



SINGLE/TWIN/QUAD MODELS AVAILABLE

Please contact our sales department at 737-200-7090 or sales@InnowaveRF.com for any custom requirements.

© Innowave RF, LLC. All Rights Reserved. Specs can change without notice. Drawings are for reference purpose only.