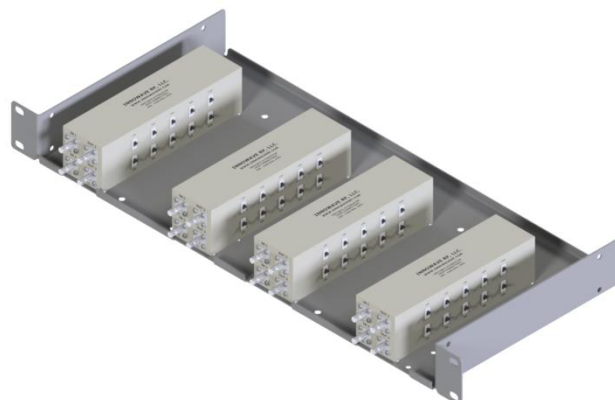


R319H-SW-QMA-QMA is a Rack-mounted DAS Tray solution that holds 8 Variable Attenuators on a 1RU High Rack or H-Frame. Each Attenuator Module (Model #: 318Z-SW-QMA-QMA) has 2x variable attenuators integrated in one housing, each having its own independent RF path. The attenuation value can be varied from 1 dB to 31 dB, in 1 dB steps. The connectors are on the side of the units, so that 4 modules can be mounted on a rack, which makes it easy to plug in the INPUT and OUTPUT on the front. Each attenuator path can handle 5W of power and operates from 600MHz - 4200MHz. The Attenuators come with QMA (F) connectors standard.

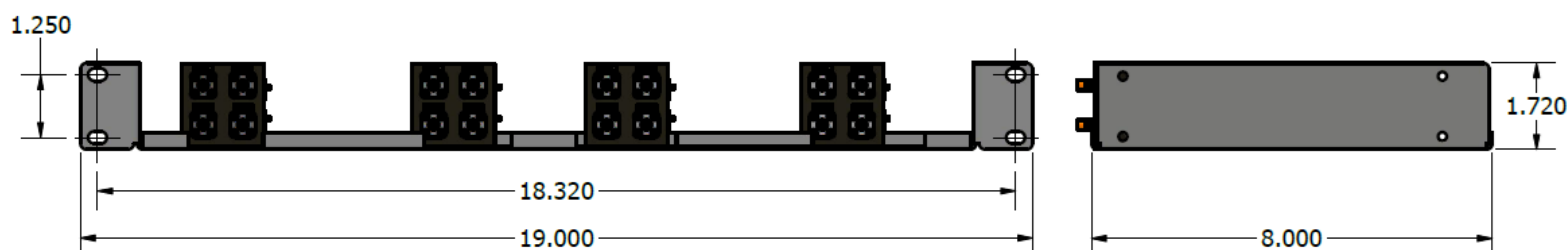
- 8 Variable Attenuators on 1RU tray
- Each attenuator can be varied from 1dB to 31dB, with 1dB intervals
- INPUT & OUTPUT connectors on the front of the Rack for easy cable management
- **CBRS / C-Band** Ready
- QMA Connectors Standard
- In Stock to low lead time delivery



ELECTRICAL & MECHANICAL SPECIFICATIONS:

Attenuation Value (XX)	1 dB to 31 dB (with 1 dB increments)
Attenuation Accuracy	± 1.0 dB (max)
No. of Attenuators	8x per Tray (Independent RF Path)
Frequency Range	600MHz - 4200MHz
Return Loss	16 dB (Typ)
Impedance	50 Ohms
Input Power	5W (Average Power)
Temperature Range	-30°C to 70°C
Weight	10 lbs
Connectors	IN & OUT – QMA(F)
Rack Space Needed	1RU
Dimensions	1.72"(H) x 18.88"(W) x 7.875"(D)
Environmental	IP65

Dimensions for R319Z-SW-QMA-QMA:



Please contact our sales department at 737-200-7090 or sales@InnowaveRF.com for any custom requirements.

© Innowave RF, LLC. All Rights Reserved. Specs can change without notice. Drawings are for reference purpose only.