

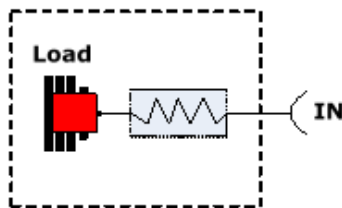
301L-200 Series of Low-PIM RF Terminations operates from 600MHz to 2700MHz and is rated at 200 Watts of average power. These terminations are mechanically well constructed to allow maximum heat dissipation to sustain long life by preventing temperature hot spots. These are precision machined, robust and can be used over a wide range of temperature and environmental conditions. They are perfect for both Indoor and Outdoor applications.

FEATURES:

- Low-PIM performance, -164dBc (min)
- Superior Mechanical Construction
- 200 Watts Power Handling
- Low VSWR from 600MHz to 2700MHz
- RoHS Compliant
- In stock and available immediately
- Available in different connector configurations



Block Diagram for 301L-200 Series



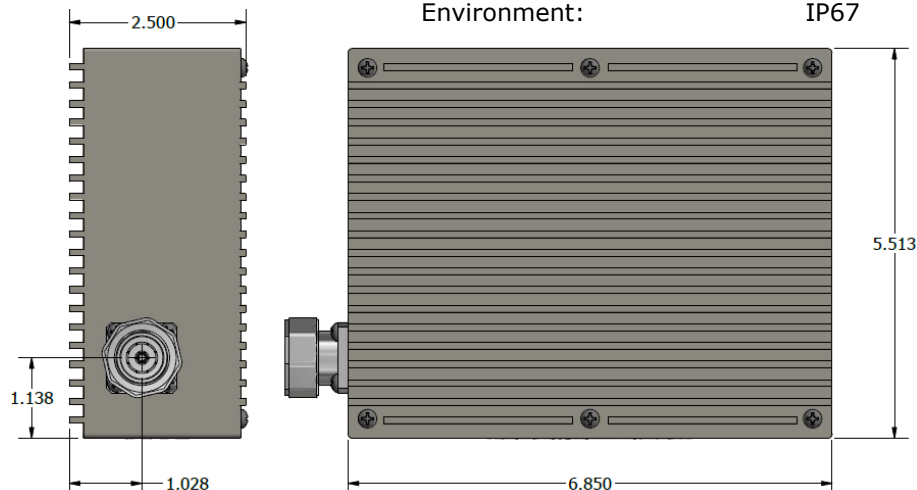
***** ORDERING INFO:**

Part #: 301L-200-*
(* - Connector Option)

ELECTRICAL & MECHANICAL SPECIFICATIONS:

Frequency Range:	600MHz – 2700MHz
VSWR	≤ 1.22 (Typ)
Input power:	200 Watts (Avg); 1000W (Peak)
Impedance:	50 Ω
Intermodulation (PIM - 3rd):	-164 dBc (Min) (2Tones +46dBm @ 60sec)
Connectors:	7/16 DIN (D) / Mini-DIN (MD) 4.3-10 (D43) / Nex10 (x10)
Housing Finish:	Aluminum Body
Mounting Method:	Mounting Panel
Weight:	3.40 lbs
Temperature Range:	-35°C to 75°C
Relative Humidity:	5% - 95%
Environment:	IP67

Dimensions for 301L-200-D43



Please contact our sales department at 737-200-7090 or sales@InnowaveRF.com for any custom requirements.

© Innowave RF, LLC. All Rights Reserved. Specs can change without notice. Drawings are for reference purpose only.