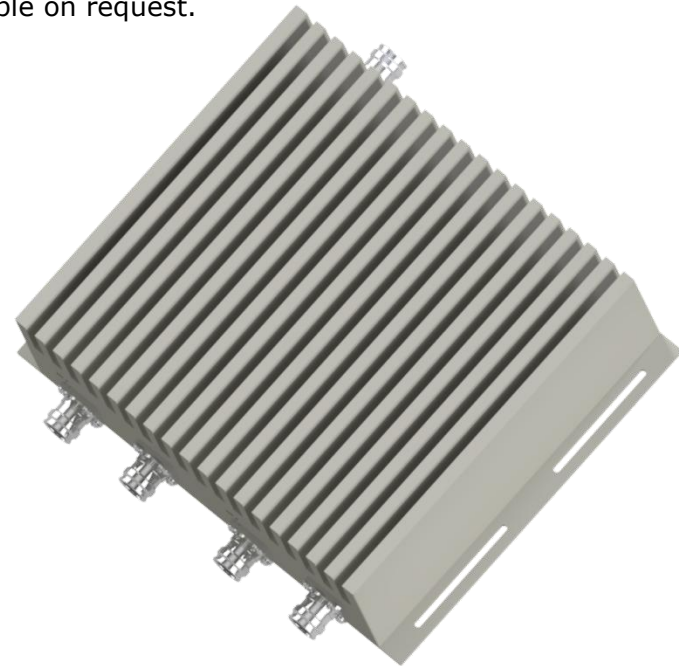


236X-600-2700 is 4x1, 6dB Hybrid Combiner with 3 of the Output ports internally terminated with 50 Ohms loads. These can be used to combine any 4 signals in the 600MHz - 2700MHz range, including Band 71. The combined signals will appear at the output port. It can also be used to split one input signal into 4 output ports. The unused port must be always terminated with a 50Ω Load. These hybrid combiners can be used over a wide range of temperature. Outdoor model available on request.

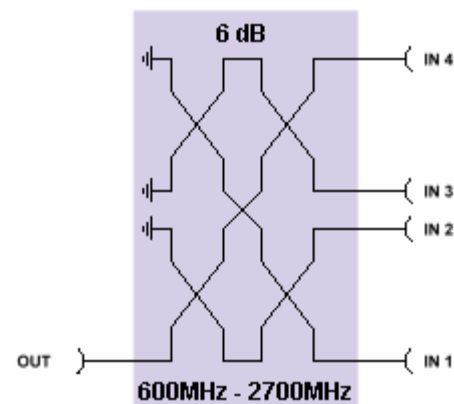
FEATURES:

- Combines 4 signals between 600 – 2700MHz
- Designed to include 600MHz (Band71)
- Best-in-class Isolation between the 4 ports
- Very low Insertion Loss
- Low-PIM & High Power Handling
- RoHS Complaint
- Indoor use
- In Stock & Available Immediately
- Ease of Mounting with mounting holes / brackets
- Available in different Connector configurations



ELECTRICAL SPECIFICATIONS:

| | |
|------------------------------|-----------------------------|
| Frequency Range: | 600MHz – 2700MHz |
| Coupling Loss: | 6.20 dB ±0.90dB |
| Isolation: | 25.00 dB |
| VSWR: | 1.25 |
| Impedance: | 50 Ohms |
| Input Power: | 100 Watts (Avg) / Port |
| Intermodulation (PIM - 3rd): | -160 dBc (2Tones +43dBm) |



MECHANICAL SPECIFICATIONS:

| | |
|--------------------|---|
| Connectors: | DIN (D) / Nex10 (X10) Mini-DIN (MD) / 4.3-10 (D43) |
| Housing Finish: | Aluminum Body |
| Mounting Method: | Mounting Kit |
| Temperature Range: | -20°C to 60°C |
| Weight: | 7.50 lbs |
| Humidity: | 5% - 95% |
| Environment: | IP64 |

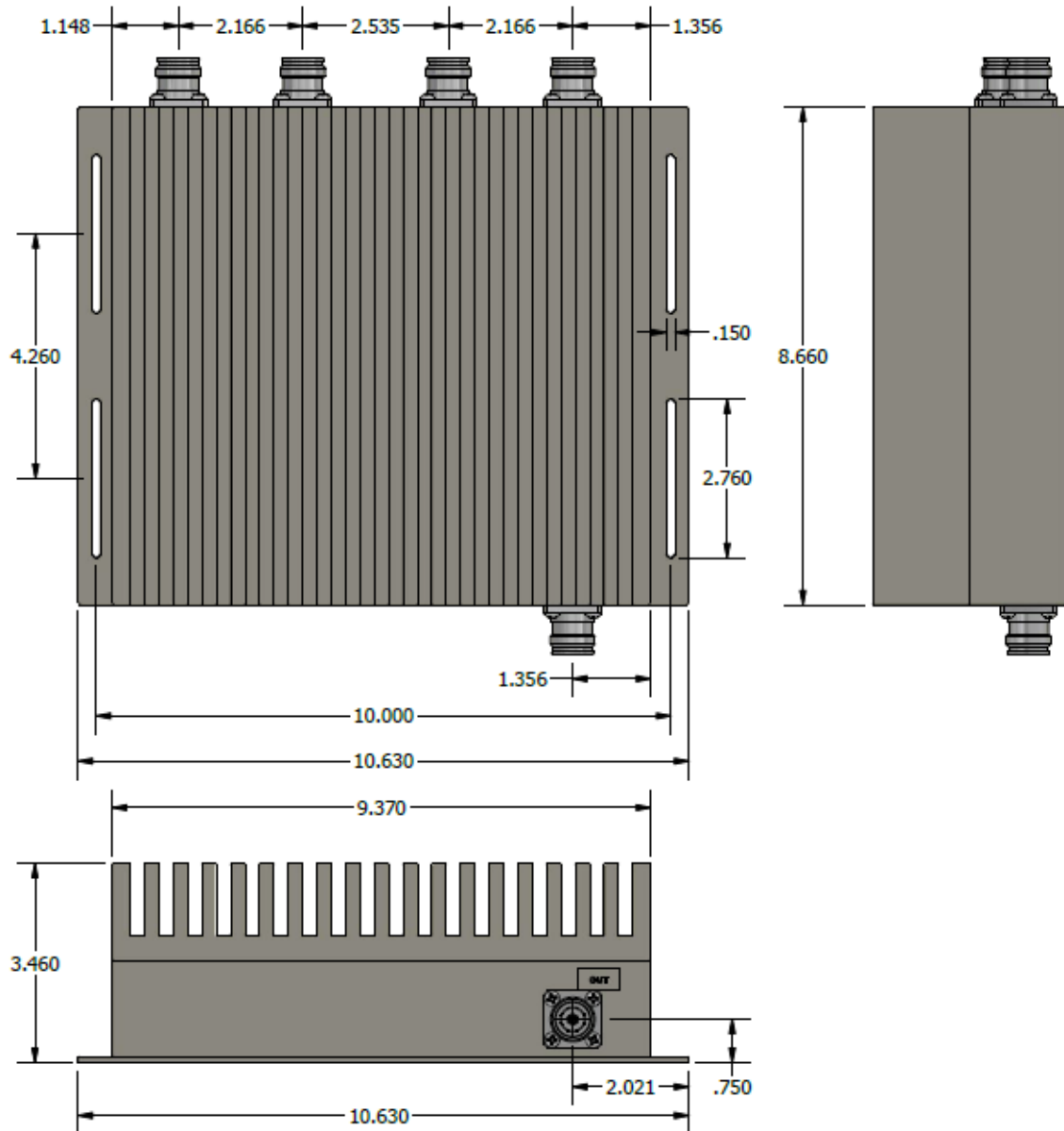
ORDERING INFO:

Connector Configuration:

Part#: 236X-600-2700-*

* - See Connector Options

Dimensions for 236X-600-2700-D43



Please contact our sales department at 737-200-7090 or sales@InnowaveRF.com for any custom requirements.

© Innowave RF, LLC. All Rights Reserved. Specs can change without notice. Drawings are for reference purpose only.