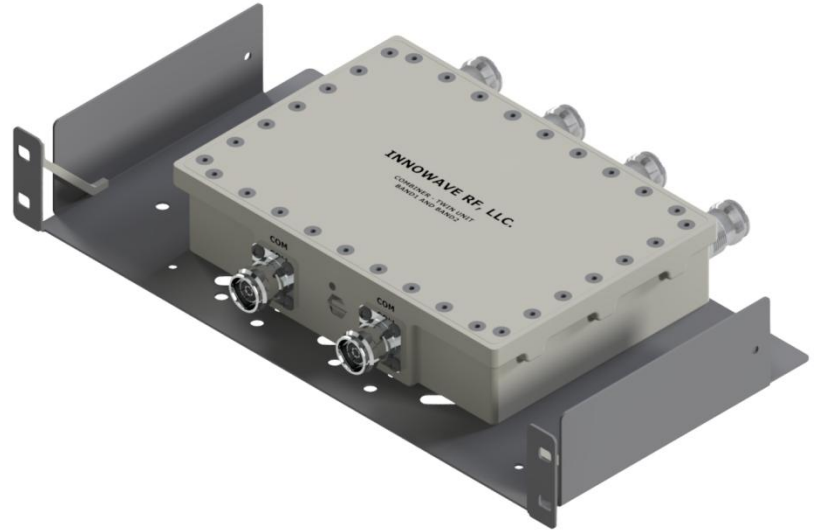


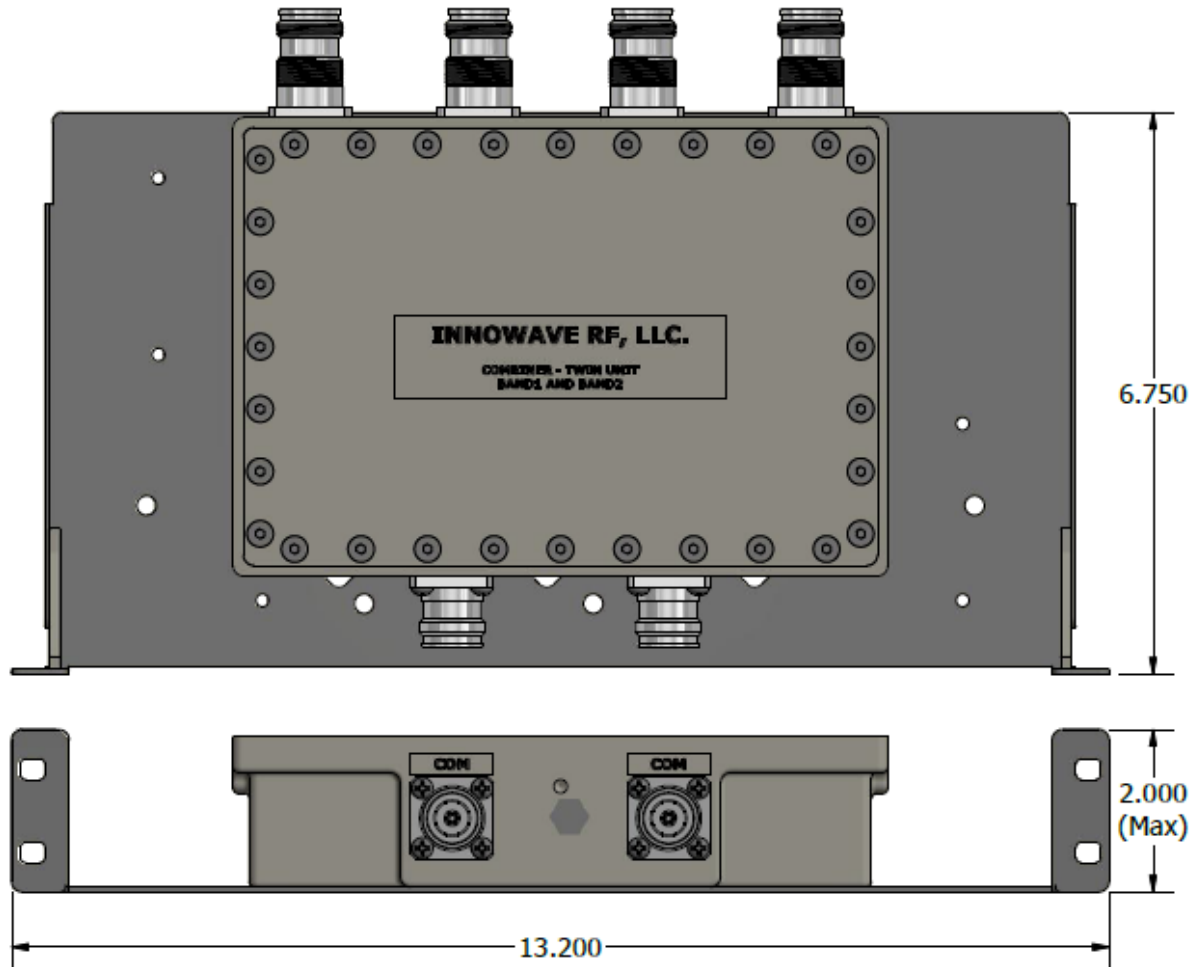
FEATURES:

- Combiner Module to **splits or combines any two frequency bands** for DRAN systems
- Twin Diplexers
- Ideal for Low-Power and Mid-Power Radios
- Minimum 40dB Isolation
- Low-PIM and Low Insertion Loss
- Interchangeable Modules for easy upgrades and Troubleshooting
- *RoHS* Compliant
- Rugged, Weatherproof IP67 unit



ELECTRICAL SPECIFICATIONS:

Part Numbers	Freq Bands	600 (B71) / 700 LTE	850GSM / 850CDMA	AWS-1 / AWS-3	PCS	WCS	BRS
D903C-1925-2390				Port2	Port1	Port2	Port2
D903C-1940-2490				Port1	Port1	Port2	Port2
D903C-742-852		Port1	Port2				
D903C-829-2205		Port1	Port1	Port2	Port2	Port2	Port2
Passband Insertion Loss	0.30 dB						
Isolation	≥ 40 dB						
Return Loss	21 dB						
Impedance	50 Ohms						
Input Power	40 Watts (Avg); 250 Watts (Peak)						
Intermodulation (PIM - 3 rd)	-161 dBc (2 Tones +43 dBm)						
Connectors	4.3-10 / Nex10						
Temperature Range	-35°C to 75°C						
Environment	IP67 (Outdoor)						
Relative Humidity	5% - 95%						
Weight	7.00 lbs						
Dimensions	13.200" x 6.750" x 2.000"						



Please contact our sales department at 737-200-7090 or sales@InnowaveRF.com for any custom requirements.

© Innowave RF, LLC. All Rights Reserved. Specs can change without notice. Drawings are for reference purpose only.