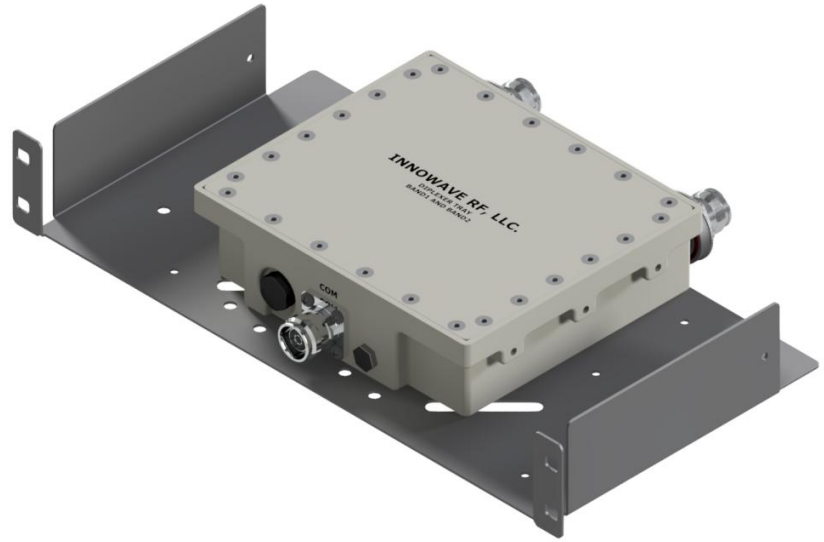


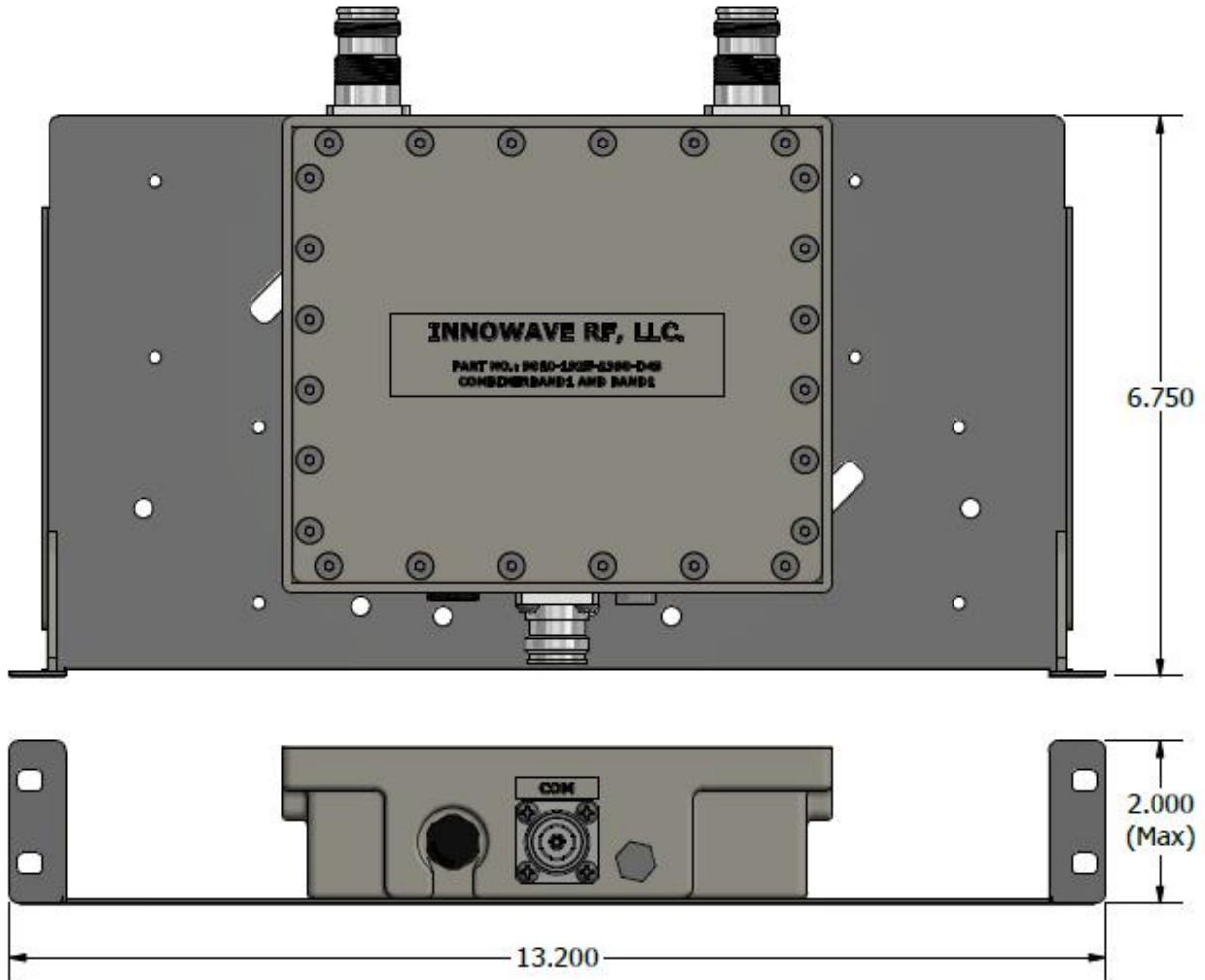
**FEATURES:**

- Combiner Module to **splits or combines any two frequency bands** for DRAN systems
- Ideal for Low-Power and Mid-Power Radios
- Minimum 40dB Isolation
- Low-PIM and Low Insertion Loss
- Interchangeable Modules for easy upgrades and Troubleshooting
- *RoHS* Complaint
- Rugged, Weatherproof IP67 unit



**ELECTRICAL SPECIFICATIONS:**

| Part Numbers                             | Freq Bands                       | 600 (B71) / 700 LTE | 850GSM / 850CDMA | AWS-1 / AWS-3 | PCS   | WCS   | BRS   |
|--|----------------------------------|---------------------|------------------|---------------|-------|-------|-------|
| D901C-1925-2390                          |                                  |                     |                  | Port2         | Port1 | Port2 | Port2 |
| D901C-1940-2490                          |                                  |                     |                  | Port1         | Port1 | Port2 | Port2 |
| D901C-742-852                            |                                  | Port1               | Port2            |               |       |       |       |
| D901C-829-2205                           |                                  | Port1               | Port1            | Port2         | Port2 | Port2 | Port2 |
| Passband Insertion Loss                  | 0.30 dB                          |                     |                  |               |       |       |       |
| Isolation                                | ≥ 40 dB                          |                     |                  |               |       |       |       |
| Return Loss                              | 21 dB                            |                     |                  |               |       |       |       |
| Impedance                                | 50 Ohms                          |                     |                  |               |       |       |       |
| Input Power                              | 40 Watts (Avg); 250 Watts (Peak) |                     |                  |               |       |       |       |
| Intermodulation (PIM - 3 <sup>rd</sup> ) | -161 dBc (2 Tones +43 dBm)       |                     |                  |               |       |       |       |
| Connectors                               | 4.3-10 / Nex10                   |                     |                  |               |       |       |       |
| Temperature Range                        | -35°C to 75°C                    |                     |                  |               |       |       |       |
| Environment                              | IP67 (Outdoor)                   |                     |                  |               |       |       |       |
| Relative Humidity                        | 5% - 95%                         |                     |                  |               |       |       |       |
| Weight                                   | 4.00 lbs                         |                     |                  |               |       |       |       |
| Dimensions                               | 13.200" x 6.750" x 2.000"        |                     |                  |               |       |       |       |



Please contact our sales department at 737-200-7090 or [sales@InnowaveRF.com](mailto:sales@InnowaveRF.com) for any custom requirements.

© Innowave RF, LLC. All Rights Reserved. Specs can change without notice. Drawings are for reference purpose only.