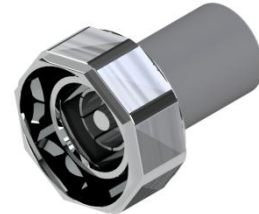


302-5 Series of RF Terminations can be used for a broad range of applications operating from DC to 4200 MHz and is rated at 5 Watts power. These are precision machined, robust and can be used over a wide range of temperature and environmental conditions. They are perfect for both Indoor and Outdoor DAS applications.

FEATURES:

- Superior Mechanical Construction
- 5 Watts Power Handling
- Low VSWR from DC to 4200MHz
- RoHS Complaint
- In stock and available immediately
- Available in DIN, Mini-DIN, 4.3-10 or Type-N Connectors



ELECTRICAL & MECHANICAL SPECIFICATIONS:

Frequency Range:	DC – 4200 MHz
VSWR	≤ 1.25 (Typ)
Input power:	5 Watts (Avg)
Impedance:	50 Ω
Connectors Options:	7/16 DIN (D) Mini-DIN (MD) 4.3-10 (D43) Type-N (N)
Housing Finish:	Aluminum Body
Mounting Method:	Mounting Panel
Temperature Range:	-35°C to 75°C
Weight:	0.40lbs
Relative Humidity:	5% - 95%
Environment:	IP67

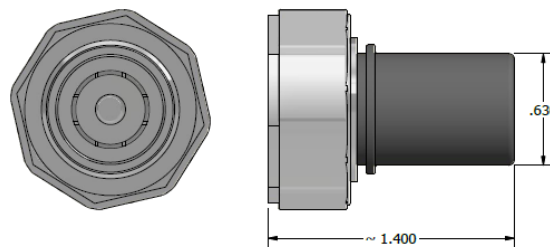
***** ORDERING INFO:**

Part #: 302-5-*
(* - Connector Option)

APPLICATIONS:

- Indoor & Outdoor DAS
- Wi-Fi / WiMAX
- Cellular and GPS
- Communication Transmitter and Receiver
- Public Safety and ISM
- Instrumentation

Dimensions for 302-5-D43



Please contact our sales department at 737-200-7090 or sales@InnowaveRF.com for any custom requirements.

© Innowave RF, LLC. All Rights Reserved. Specs can change without notice. Drawings are for reference purpose only.