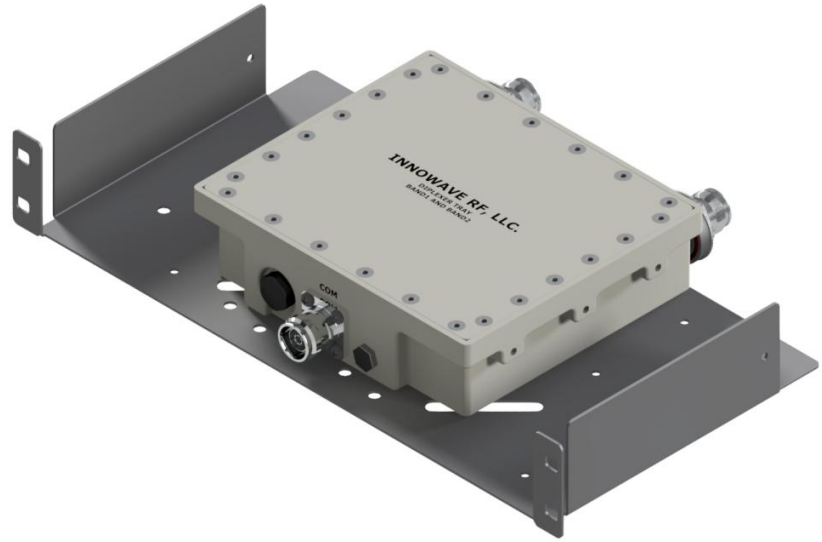


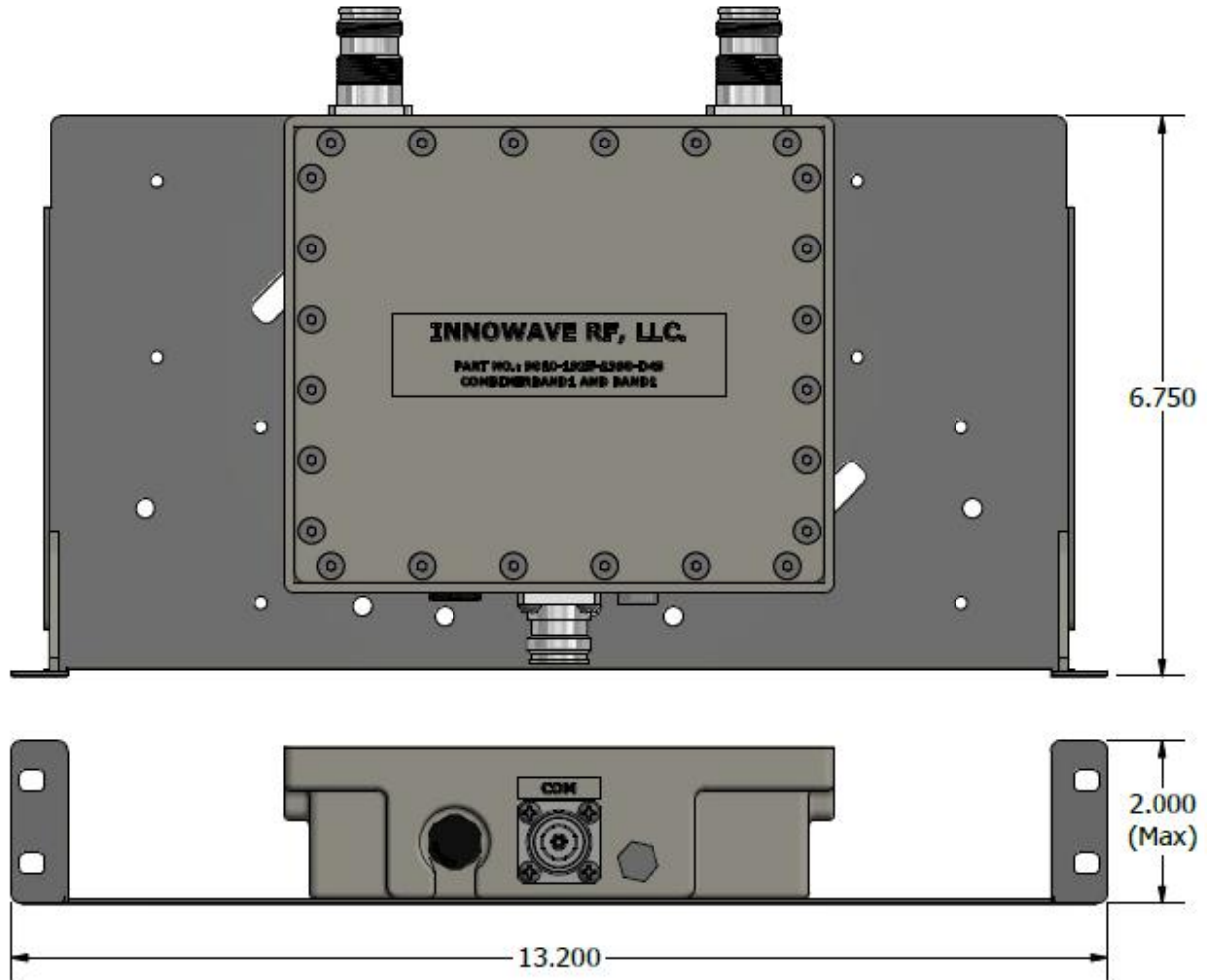
**FEATURES:**

- Combiner Module to **splits or combines any two frequency bands** for DRAN systems
- Ideal for Low-Power and Mid-Power Radios
- Minimum 40dB Isolation
- Low-PIM and Low Insertion Loss
- Interchangeable Modules for easy upgrades and Troubleshooting
- *RoHS* Complaint
- Rugged, Weatherproof IP67 unit



**ELECTRICAL SPECIFICATIONS:**

Part Numbers \ Freq Bands	600 (B71) / 700 LTE	850GSM / 850CDMA	AWS-1 / AWS-3	PCS	WCS	BRS
D901C-1925-2390			Port2	Port1	Port2	Port2
D901C-1940-2490			Port1	Port1	Port2	Port2
D901C-742-852	Port1	Port2				
Passband Insertion Loss	0.30 dB					
Isolation	≥ 40 dB					
Return Loss	21 dB					
Impedance	50 Ohms					
Input Power	40 Watts (Avg); 250 Watts (Peak)					
Intermodulation (PIM - 3 <sup>rd</sup> )	-161 dBc (2 Tones +43 dBm)					
Connectors	4.3-10 / Nex10					
Temperature Range	-35°C to 75°C					
Environment	IP67 (Outdoor)					
Relative Humidity	5% - 95%					
Weight	4.00 lbs					
Dimensions	13.200" x 6.750" x 2.000"					



Please contact our sales department at 737-200-7090 or [sales@InnowaveRF.com](mailto:sales@InnowaveRF.com) for any custom requirements.

© Innowave RF, LLC. All Rights Reserved. Specs can change without notice. Drawings are for reference purpose only.