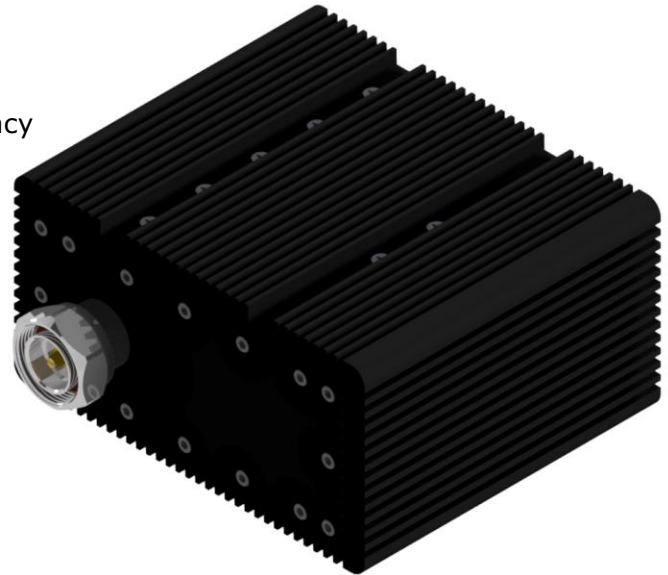


312L-XX-80 Series of In-Line Low-PIM Fixed Attenuators are designed for 80W applications from 600MHz - 3800MHz. These attenuators are guaranteed for Low-PIM performance in the entire frequency range, **including CBRS**. These units are rugged in their construction and can handle harsh environmental conditions. They are perfect for indoor and outdoor applications. Standard values include are listed in the specifications below. **Custom attenuation values can also be manufactured on request.**

FEATURES:

- Covers all cellular bands including CBRS Band
- Fixed In-Line Attenuator with a high degree of accuracy
- Small Form-Factor and Light Weight
- Flat response from 600MHz - 3800MHz
- Conventional Male(IN) / Female(OUT)
- Outstanding PIM performance, -161dBc typical
- Low VSWR across the band
- Ease of Mounting with mounting brackets
- *RoHS* Complaint
- Weatherproof / Outdoor unit
- In Stock to low lead time delivery


ELECTRICAL SPECIFICATIONS:

Attenuation	3dB	5dB	6dB	10dB	15dB	20dB	25dB	30dB	40dB
Attenuation Accuracy	600-698 ≤ ±0.70 698-3800 ≤ ±0.50			600-698 ≤ ±0.75 698-3800 ≤ ±0.50			600-698 ≤ ±1.00 698-3800 ≤ ±0.75		
Frequency Range	600MHz - 3800MHz								
Return Loss	18 dB (Typ)								
Intermodulation (PIM - 3 rd)	-161 dBc (Typ) (2 Tones +43 dBm)								
Impedance	50 Ohms								
Input Power	80W (Average Power)								

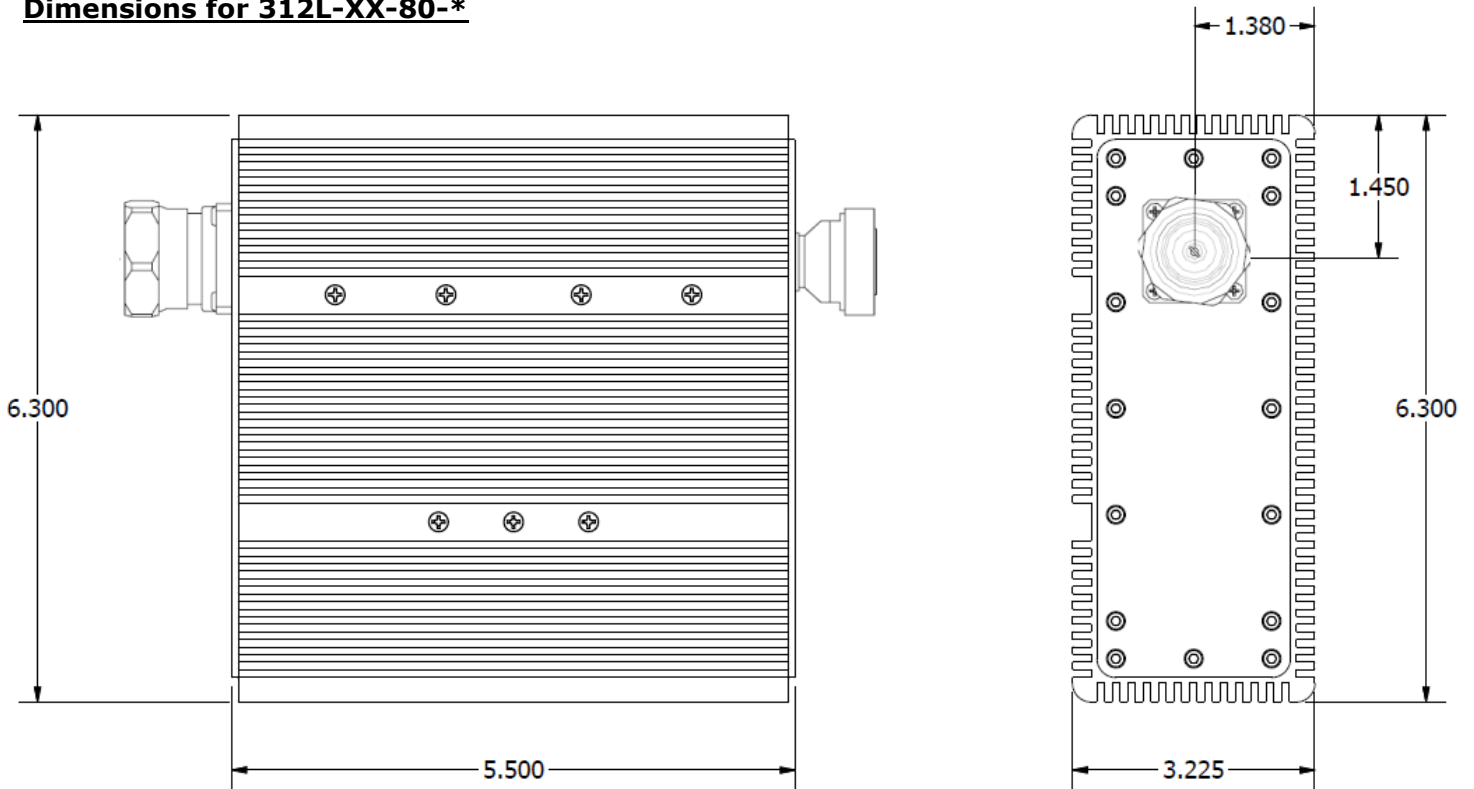
MECHANICAL SPECIFICATIONS:

Connectors:	7/16 DIN(D) / Mini-DIN(MD) / 4.3-10(D43) / Type-N(N) / Nex-10(X10)
Housing Finish:	Aluminum Body
Mounting Method:	Mounting Bracket
Temperature Range:	-35°C to 75°C
Relative Humidity:	5% - 95%
Weight:	7.75 lbs
Environment:	IP67

***** ORDERING INFO:**
Part No.: Part#: 312L-XX-80-*

XX - Attenuation Value
** - Connector Option*

Dimensions for 312L-XX-80-*



Please contact our sales department at 737-200-7090 or sales@InnowaveRF.com for any custom requirements.

© Innowave RF, LLC. All Rights Reserved. Specs can change without notice. Drawings are for reference purpose only.