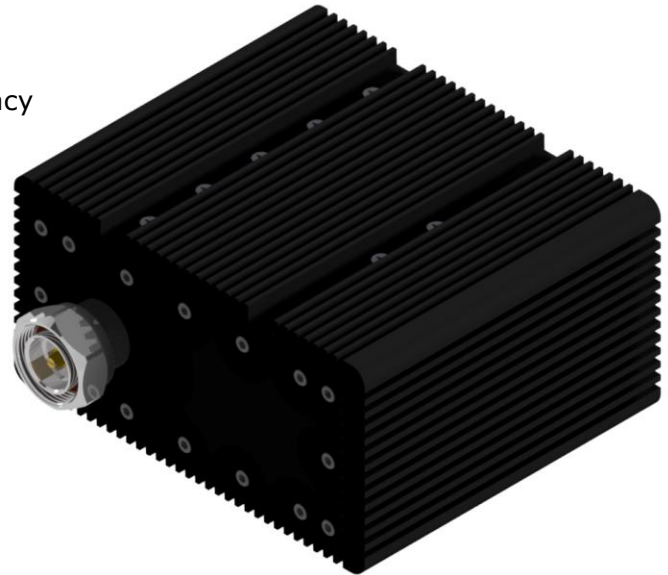


**311L-XX-80 Series** of In-Line Low-PIM Fixed Attenuators are designed for 80W applications from 600MHz - 2700MHz. These attenuators are guaranteed for Low-PIM performance in the entire frequency range. These units are rugged in their construction and can handle harsh environmental conditions. They are perfect for indoor and outdoor applications. Standard values include are listed in the specifications below. **Custom attenuation values can also be manufactured on request.**

**FEATURES:**

- Fixed In-Line Attenuator with a high degree of accuracy
- Small Form-Factor and Light Weight
- Flat response from 600MHz - 2700MHz
- Conventional Male(IN) / Female(OUT)
- Outstanding PIM performance, -161dBc typical
- Low VSWR across the band
- Ease of Mounting with mounting brackets
- RoHS Complaint
- Weatherproof / Outdoor unit
- In Stock to low lead time delivery


**ELECTRICAL SPECIFICATIONS:**

|  |                                  |      |      |      |      |      |       |       |      |
|--|----------------------------------|------|------|------|------|------|-------|-------|------|
| Attenuation                              | 3dB                              | 5dB  | 6dB  | 10dB | 15dB | 20dB | 25dB  | 30dB  | 40dB |
| Attenuation Accuracy                     | ±0.5                             | ±0.5 | ±0.5 | ±1.0 | ±1.0 | ±1.0 | ±1.25 | ±1.25 | ±1.5 |
| Frequency Range                          | 600MHz - 2700MHz                 |      |      |      |      |      |       |       |      |
| Return Loss                              | 20 dB (Typ)                      |      |      |      |      |      |       |       |      |
| Intermodulation (PIM - 3 <sup>rd</sup> ) | -161 dBc (Typ) (2 Tones +43 dBm) |      |      |      |      |      |       |       |      |
| Impedance                                | 50 Ohms                          |      |      |      |      |      |       |       |      |
| Input Power                              | 80W (Average Power)              |      |      |      |      |      |       |       |      |

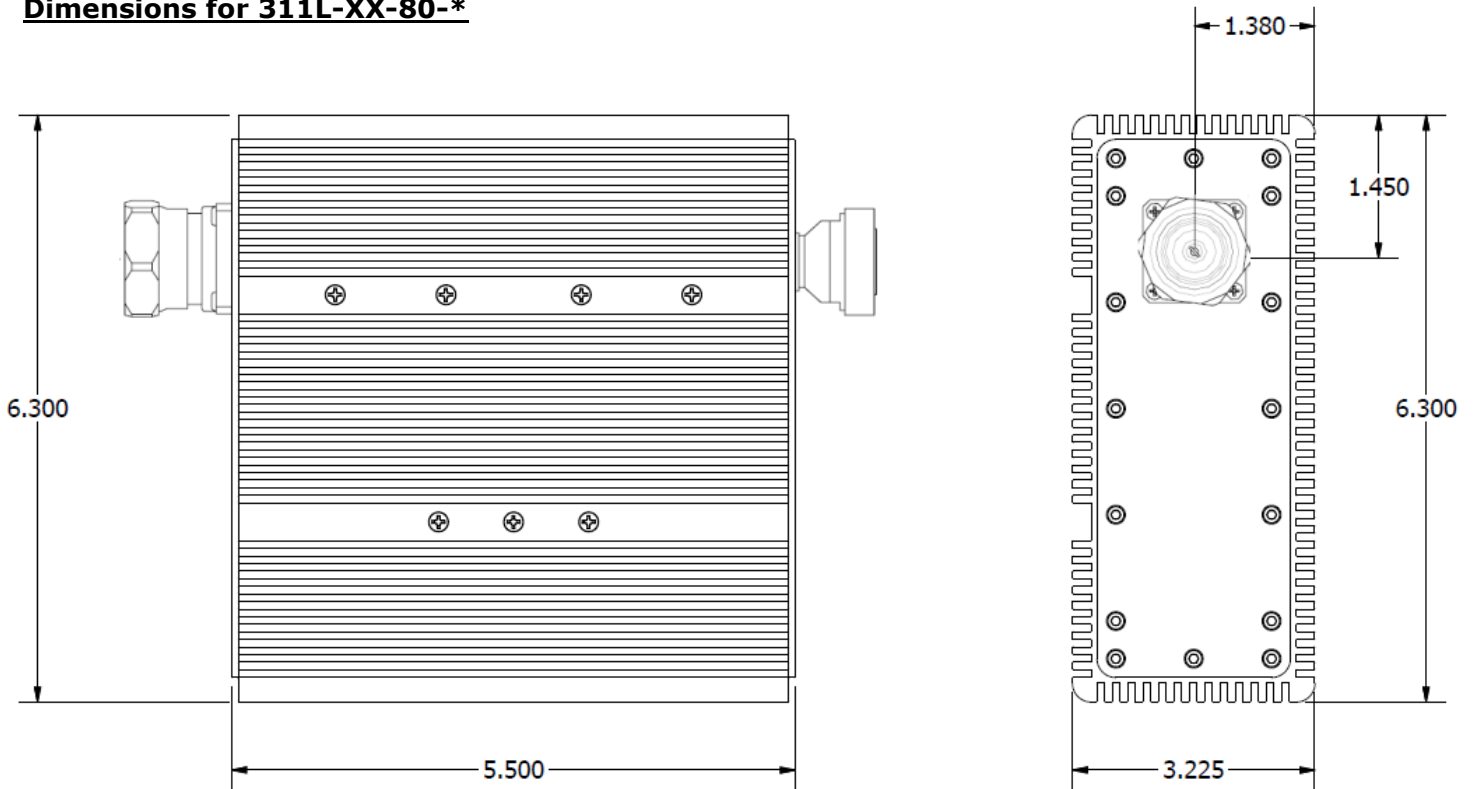
**MECHANICAL SPECIFICATIONS:**

|                    |  |
|--------------------|--|
| Connectors:        | 7/16 DIN(D) / Mini-DIN(MD) / 4.3-10(D43) / Type-N(N) / Nex-10(X10) |
| Housing Finish:    | Aluminum Body  |
| Mounting Method:   | Mounting Bracket   |
| Temperature Range: | -35°C to 75°C  |
| Relative Humidity: | 5% - 95%   |
| Weight:            | 7.75 lbs   |
| Environment:       | IP67   |

**\*\*\* ORDERING INFO:**
**Part No.:** Part#: 311L-XX-80-\*

*XX - Attenuation Value*
*\* - Connector Option*

**Dimensions for 311L-XX-80-\***



Please contact our sales department at 737-200-7090 or [sales@InnowaveRF.com](mailto:sales@InnowaveRF.com) for any custom requirements.

© Innowave RF, LLC. All Rights Reserved. Specs can change without notice. Drawings are for reference purpose only.