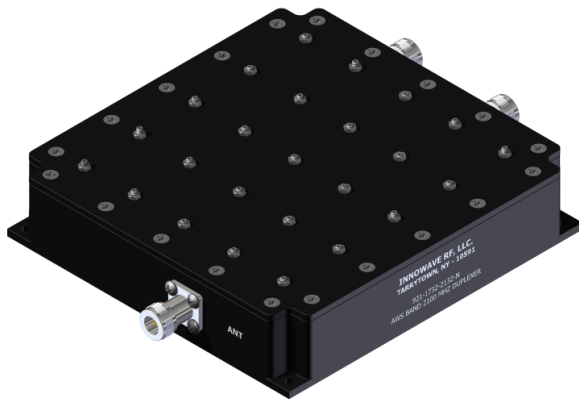
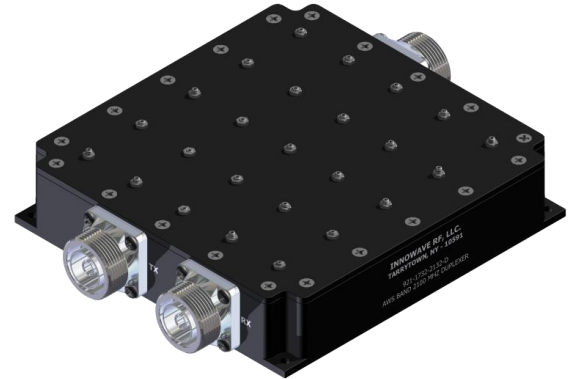
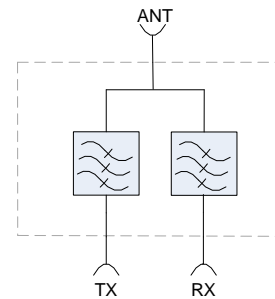


FEATURES:

- Splits or combines the Uplink and Downlink frequencies within the **AWS-1 Band**
- Best-in-class Isolation between the 2 signals
- Very low Insertion Loss with superior out of band rejections
- Low-PIM with High Power Handling
- Available in 7/16 DIN and Type-N Connectors
- Weatherproof / Outdoor unit (*921W Series*) also available
- *RoHS* Compliant
- In Stock to low lead time delivery



Block Diagram for 921Z-1732-2132



ELECTRICAL SPECIFICATIONS:

Frequency Bands	Downlink Freq 2110MHz - 2155MHz	Uplink Freq 1710MHz - 1755MHz
Passband Insertion Loss	0.35 dB	
Isolation	75dB @ 1710MHz - 1755MHz	75dB @ 2110MHz - 2155MHz
Return Loss	22 dB (Typ)	
Impedance	50 Ohms	
Input Power	250 Watts (Avg); 500 Watts (Peak)	
Intermodulation (PIM - 3 rd)	-155 dBc (Typ) (2 Tones +43 dBm)	

MECHANICAL SPECIFICATIONS:

Connectors: 7/16 DIN (D) / Type-N (N)
 Housing Finish: Aluminum Body
 Mounting Method: Mounting Panel
 Temperature Range: -35°C to 75°C
 Relative Humidity: 5% - 95%
 Environment: IP64

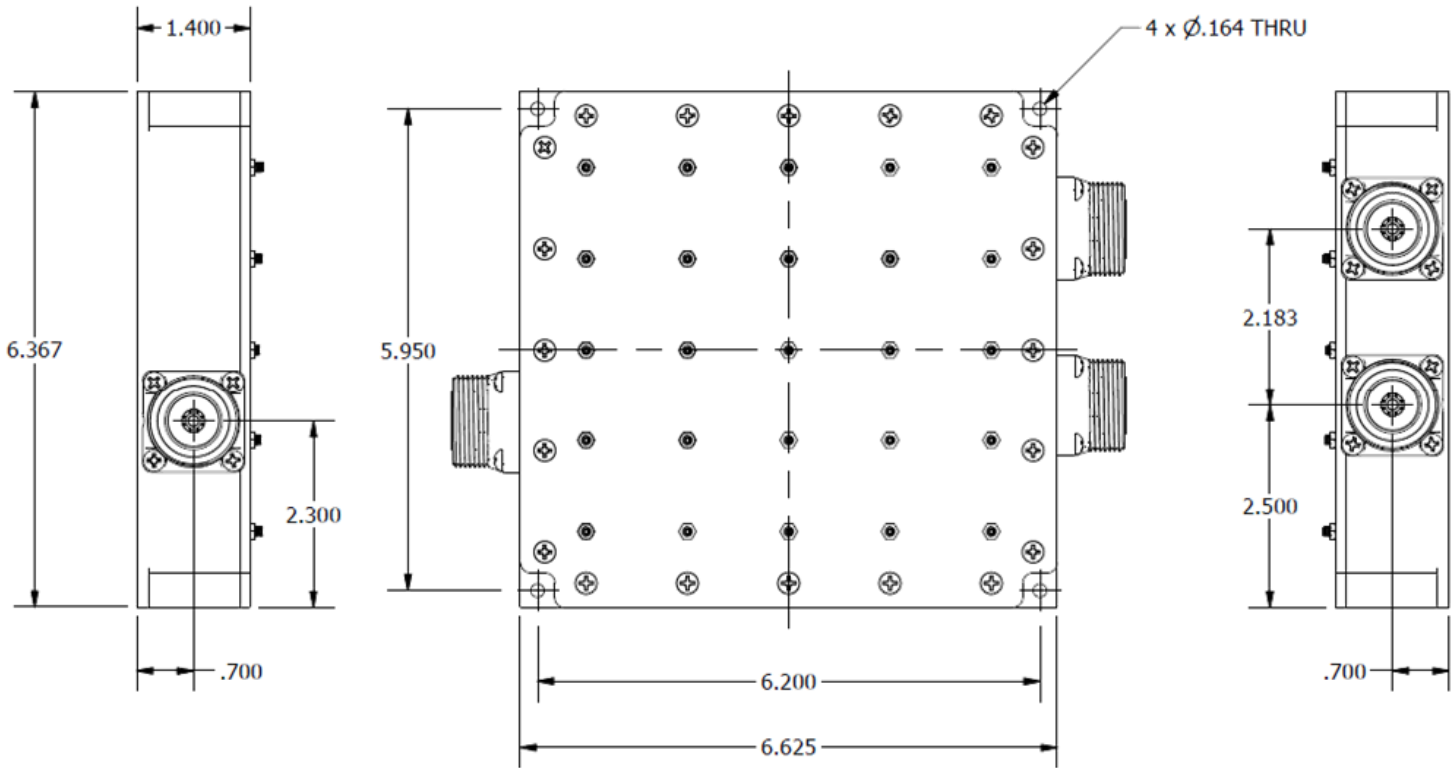
***** ORDERING INFO:**

Indoor Model:

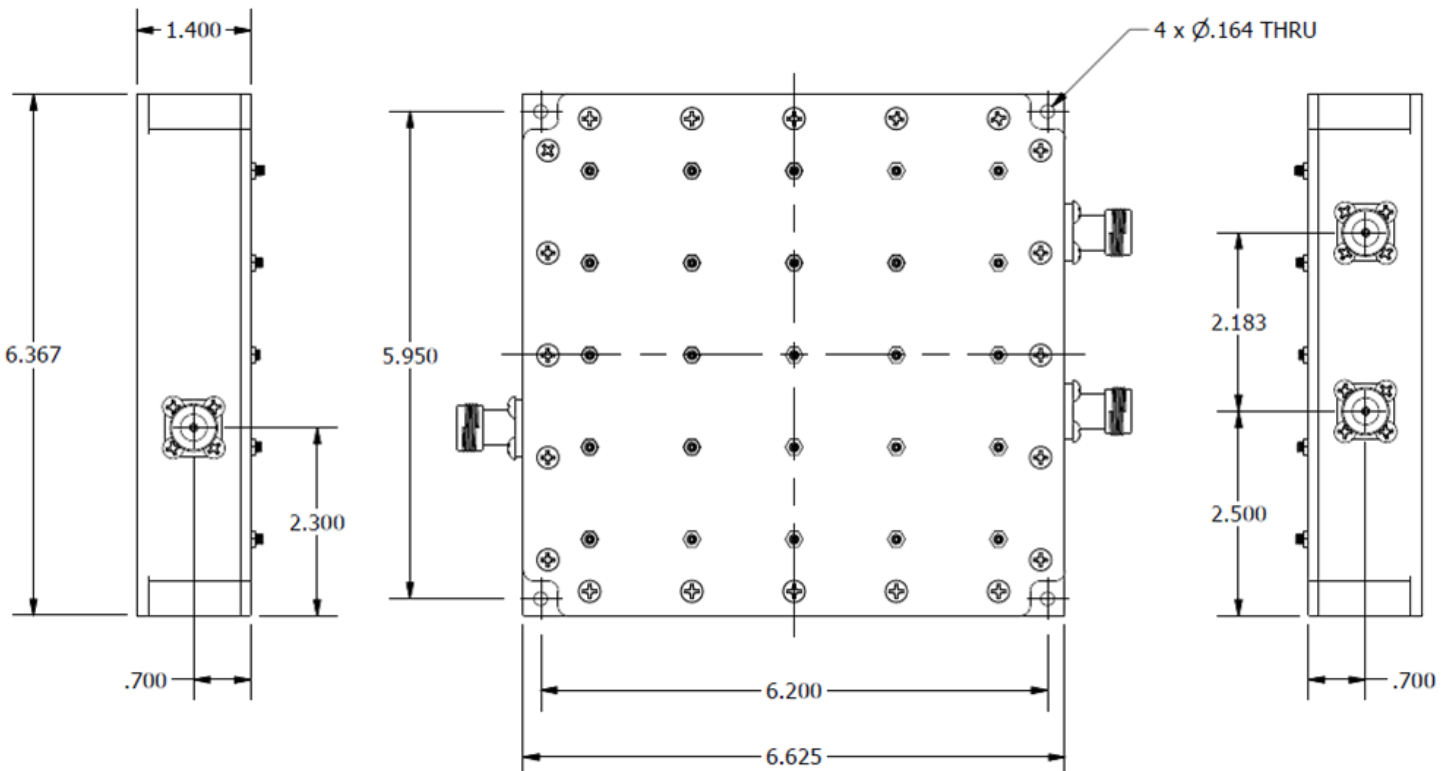
Part#: 921Z-1732-2132-*

* - Connector Option

Dimensions for 921Z-1732-2132-D



Dimensions for 921Z-1732-2132-N



Please contact our sales department at 737-200-7090 or sales@InnowaveRF.com for any custom requirements.

© Innowave RF, LLC. All Rights Reserved. Specs can change without notice. Drawings are for reference purpose only.