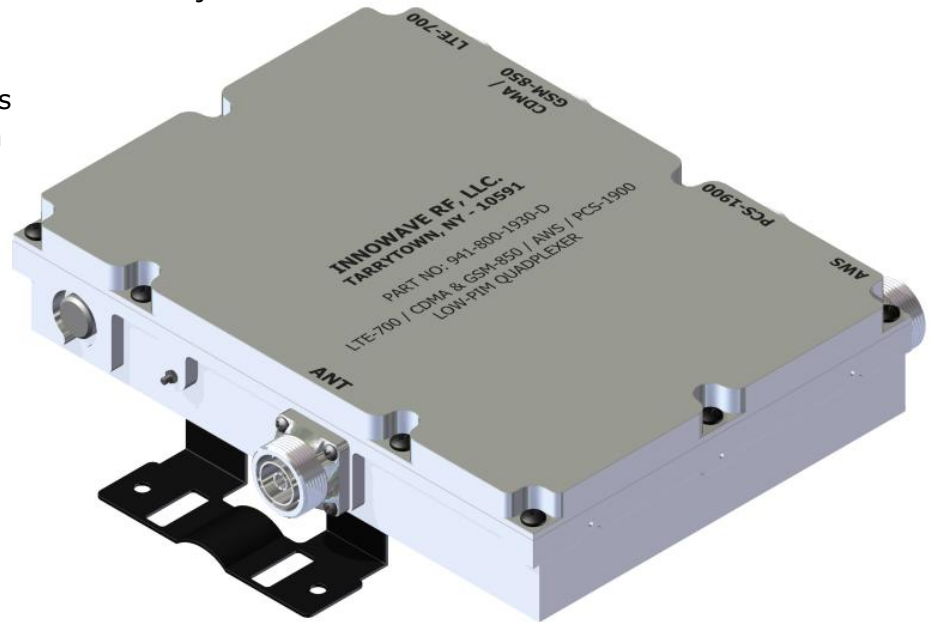


FEATURES:

- Splits or combines the **700MHz LTE Band** (698MHz-787MHz), **CDMA/850MHz GSM Band** (806MHz-894MHz), **1900MHz PCS** (1850MHz-2000MHz), **AWS Band** (1710MHz-1755MHz & 2110MHz-2155MHz)
- Excellent Isolation between the bands
- Very low Insertion Loss with superior out of band rejections
- Low-PIM with High Power Handling
- ROHS Complaint
- Ease of Mounting with mounting holes
- Weatherproof for Outdoor installation
- In Stock and Available Immediately



ELECTRICAL SPECIFICATIONS:

Frequency Bands	700 MHz LTE	850 MHz GSM/CDMA	1900 MHz PCS	AWS Band
	698MHz - 787MHz	806MHz - 894MHz	1850MHz - 2000MHz	1710MHz - 1755MHz 2110MHz - 2155MHz
Insertion Loss	≤ 0.50 dB (Typ)			
Pass Band Ripple	≤ 0.15 dB (Typ)			
Isolation	≥ 60 dB	≥ 60 dB	≥ 60 dB	≥ 60 dB
Return Loss	≤ -20 dB (Typ)			
Impedance	50 Ohms			
Input Power	200 Watts (Avg)			
Intermodulation (PIM-3 rd)*	-157dBc (Typ) (2 Tones +43 dBm)			
MTBF Hours	≥ 500,000			

MECHANICAL & ENVIRONMENTAL SPECIFICATIONS:

Connectors:	Type-N (N) / DIN (D) / Mini-DIN (MD) / 4.3-10 (D43)
Housing Finish:	Aluminum Body
Mounting Method:	Mounting Holes
Temperature Range:	-20°C to 60°C
Humidity:	5% – 95%
Environment:	IP67

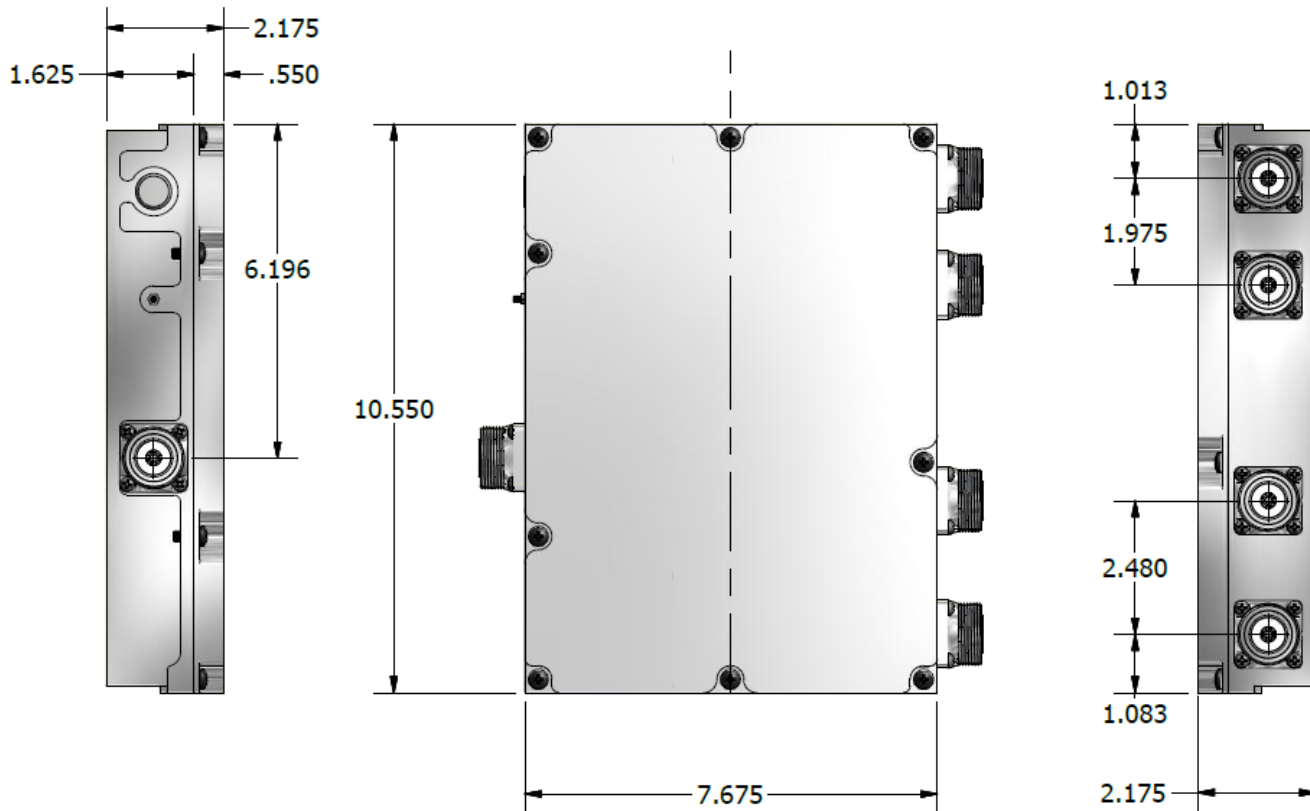
***** ORDERING INFO:**

Single Model: Part#: 941-800-1930-*

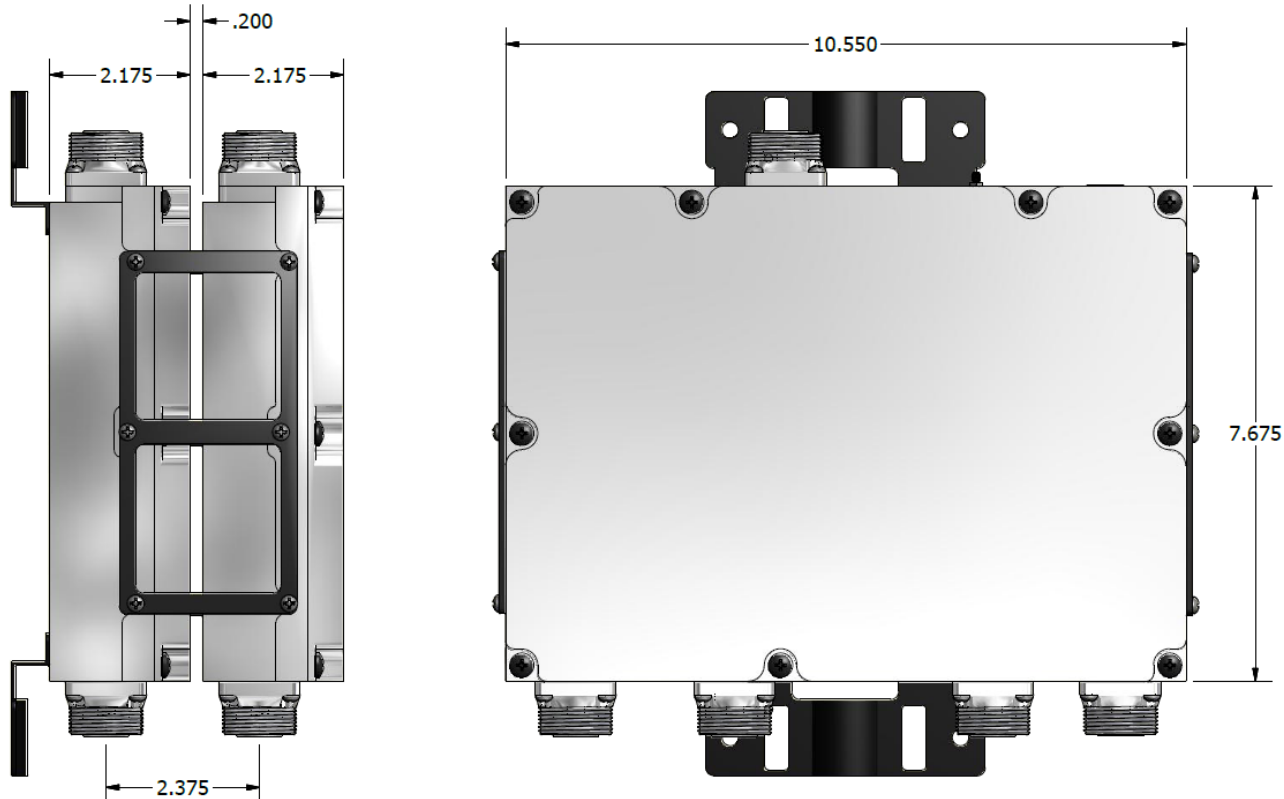
Dual Model: Part#: 942-800-1930-*

* - Connector

Dimensions for 941-800-1930-D



Dimension for 942-800-1930-D



Please contact our sales department at 914-230-4060 or sales@InnowaveRF.com for any custom requirements.
 © Innowave RF, LLC. All Rights Reserved. Specs can change without notice. Drawings are for reference purpose only.