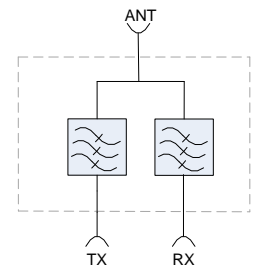
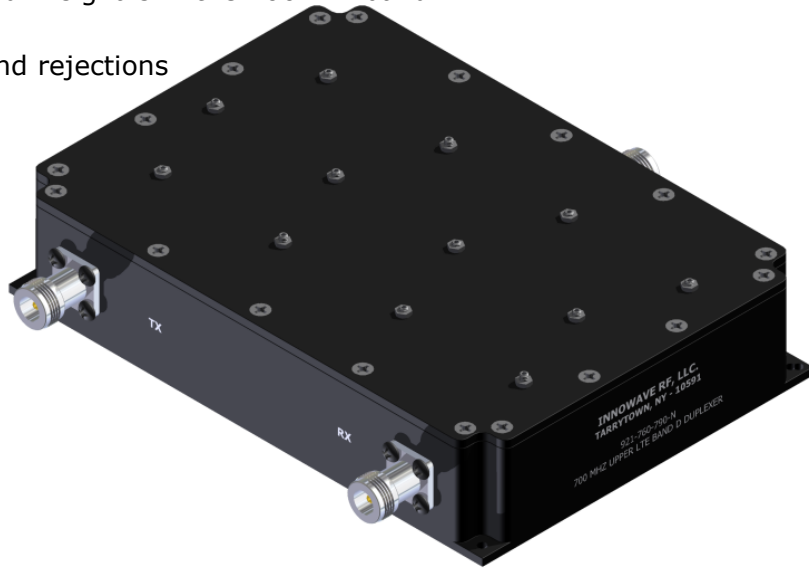
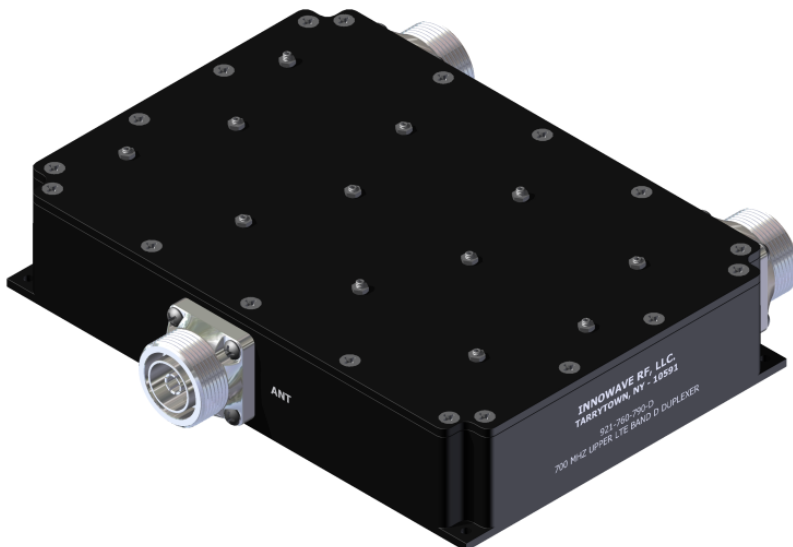


FEATURES:

- Splits or combines TX and RX in Lower LTE Band D signals in the 700MHz band
- Best-in-class Isolation between the 2 signals
- Very low Insertion Loss with superior out of band rejections
- Low-PIM with High Power Handling
- ROHS Complaint
- Ease of Mounting with mounting holes
- Available in 7/16 DIN and Type-N Connectors
- Weatherproof / Outdoor options available
- In Stock and Available Immediately



ELECTRICAL SPECIFICATIONS:

| Frequency Bands | Transmit | Receive |
|--|---|------------------------|
| | 788MHz-793MHz | 758MHz-763MHz |
| Insertion Loss | 0.35 dB (Typ) | |
| Pass Band Ripple | 0.15 dB (Typ) | |
| Isolation | ≥80 dB @ 758MHz-763MHz | ≥80 dB @ 788MHz-793MHz |
| Return Loss | 22 dB (Typ) | |
| Impedance | 50 Ohms | |
| Input Power | 250 Watts (Avg) | |
| Intermodulation (PIM - 3 rd) *** | -150dBc (Typ) / -157dBc (Typ) (2 Tones +43 dBm) | |

MECHANICAL SPECIFICATIONS:

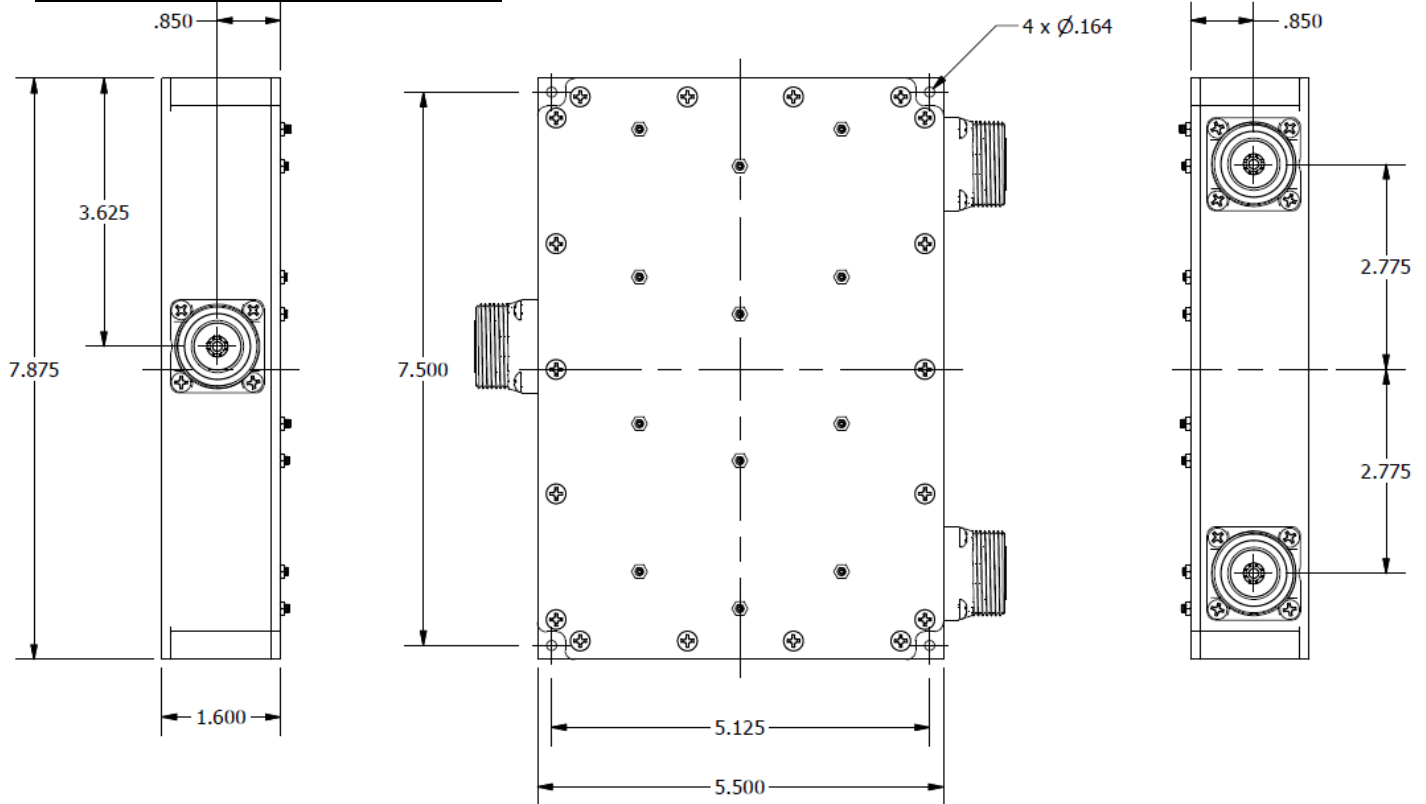
| | |
|--------------------|--|
| Connectors: | Type-N (Female) and 7/16 DIN (Female) Options Available |
| Housing Finish: | Aluminum Body |
| Mounting Method: | Mounting Holes |
| Temperature Range: | -30°C to 80°C |
| Humidity: | 5% – 95% |
| Environment: | IP64 |

*** ORDERING INFO:

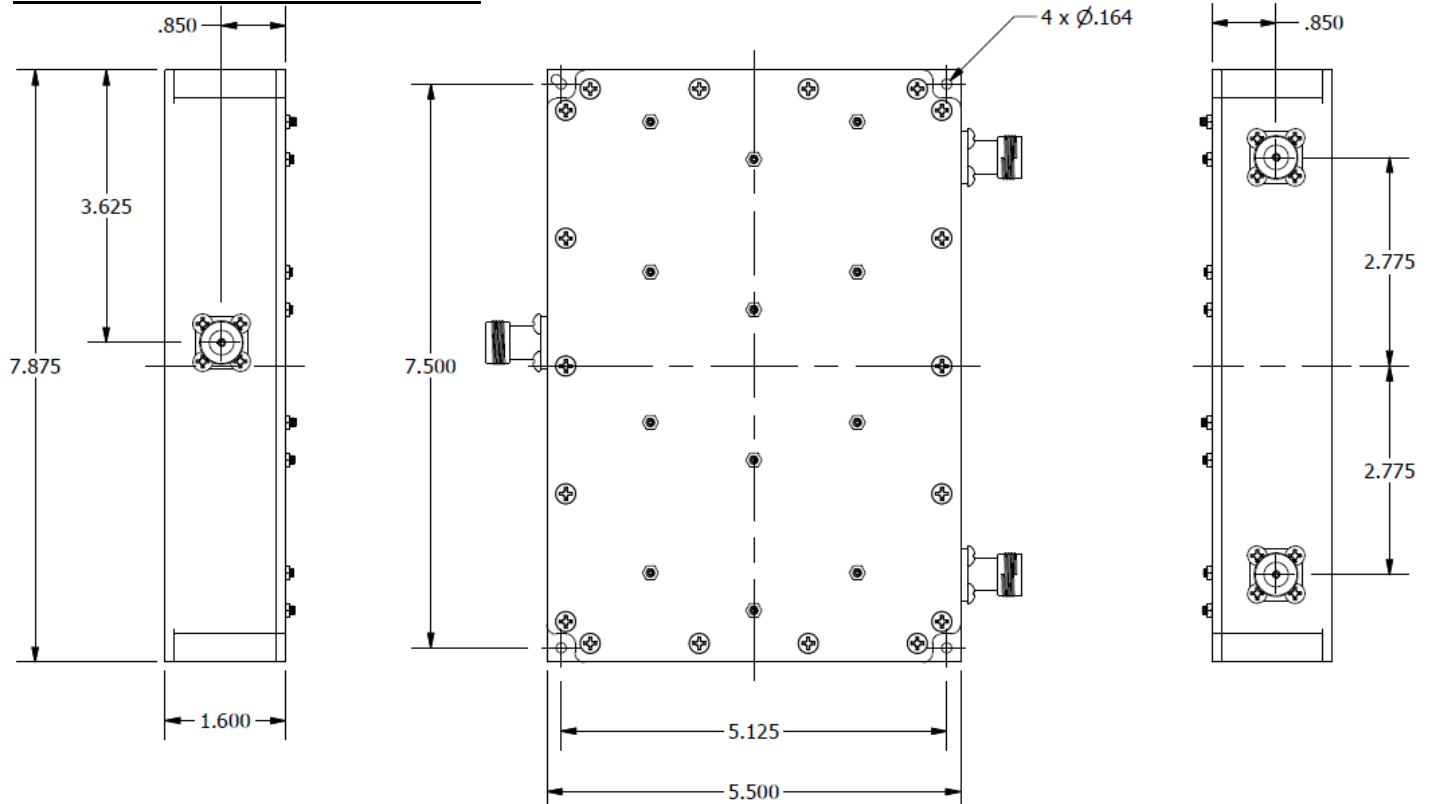
-150dBc Model: Part#: 921-760-790

Low-PIM Model: Part#: 921L-760-790
(-155dBc for Type-N & -157dBc for 7/16 DIN)

Dimensions for 921-760-790-D



Dimensions for 921-760-790-N



Please contact our sales department at 914-230-4060 or sales@InnowaveRF.com for any custom requirements.

© Innowave RF, LLC. All Rights Reserved. Specs can change without notice. Drawings are for reference purpose only.